

## KEY FEATURES

- 700 Watt Max Power (LF)
- 220 Watt Max Power (HF)
- 75 mm (3 in) voice coil, aluminium wire (LF)
- 72 mm (2.83 in) voice coil, aluminium wire (HF)
- Interleaved sandwich voice coil (LF)
- Titanium diaphragm (HF) - Neodymium magnet assembly
- Copper short, cap for extended frequency response (HF)



## MEASURE CONDITIONS

60 liters

Pink noise

40 - 2000 Hz, 12 dB/oct

GENERAL SPECIFICATIONS	LF	HF
Nominal Diameter	12 in - 320 mm	1.4 in - 35.6 mm
Nominal Impedance	4 Ohm	8 Ohm
Power handling (AES) (*)	350 Watt	110 Watt
Max Power	700 Watt	220 Watt
Frequency Range	40 ÷ 2000 Hz	1200 ÷ 20000 Hz
Voice Coil Diameter	3 in - 75 mm	2.83 in - 72 mm
S.P.L. (1w, 1m)	99 dB	106 dB
Nominal Fs	48 Hz	550 Hz
Flux Density	1.29 T	1.79 T

## MECHANICAL &amp; SHIPPING INFORMATIONS

Net weight	5.3 Kg
Overall Diameter	315 mm
Overall Depth	178 mm
Baffle Cut Diameter	282 mm
Mounting bolt diameter	295 mm

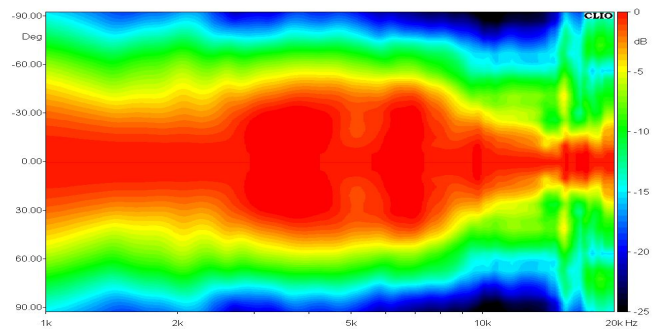
## THIELE-SMALL PARAMETERS

Qms	12.00	Sd	530 cm <sup>2</sup>
Qes	0.25	Vas	51.56 liters
Qts	0.24	u0	3.34 %
Fs	55 Hz	XMax	6 mm
Re	3.18 Ohm	Le	0.6 mH
Mms	64 g	Rms	1.84 Kg/s
Cms	0.13 mm/N	Efficiency Bandwidth	222.30
Bl	18.86 T*m		

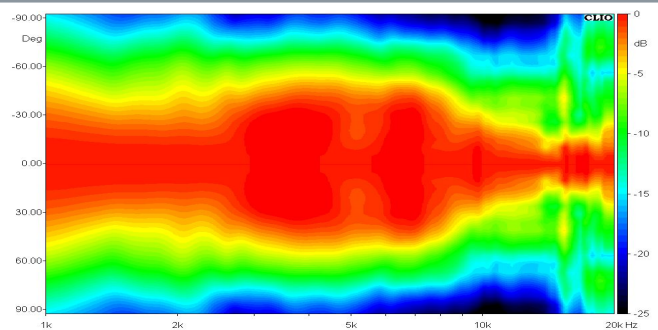
## MATERIALS

Voice Coil Former Material	Fiberglass (LF) Kapton (HF)
Voice Coil Wire	Aluminum (LF-HF)
Membrane Material	Paper (LF) Titanium (HF)
Membrane Shape	Exponential (LF) Dome (HF)
Magnet Type	Neodymium

## HORIZONTAL DIRECTIVITY



## VERTICAL DIRECTIVITY



## DIAGRAM

