

KEY FEATURES

- 200 Watt Max Power (LF)
- 20 Watt max Power (HF)
- 1.5 in - 38 mm voice coil, Aluminium wire (LF)
- 0.8 in - 20 mm voice coil, Copper wire (HF)
- Neodymium magnet; Ferrofluid inside (HF)
- PA systems application



MEASURE CONDITIONS

- 9 litres
- Pink noise
- 0.8 - 5000 Hz, 12dB/oct
- 2 hours

GENERAL SPECIFICATIONS	LF	HF
Nominal Diameter	5 in - 130 mm	0.8 in - 20 mm
Nominal Impedance	8 Ohm	3.2 Ohm
Nominal Rdc	5.3 Ohm	3.4 Ohm
Power handling (AES) (*)	100 Watt	10 Watt
Max Power	200 Watt	20 Watt
Frequency Range	100 ÷ 3000 Hz	3000 ÷ 20000 Hz
Voice Coil Diameter	1.5 in - 38 mm	0.8 in - 20 mm
S.P.L. (1w, 1m)	94.8 dB	95 dB
Nominal Fs	130 Hz	1450 Hz
Flux Density	1.25 T	1.3 T

MECHANICAL & SHIPPING INFORMATIONS

Net weight	0.95 Kg
Overall Diameter	131 mm
Overall Depth	60 mm
Baffle Cut Diameter	119 mm
Mounting bolt diameter	126 mm

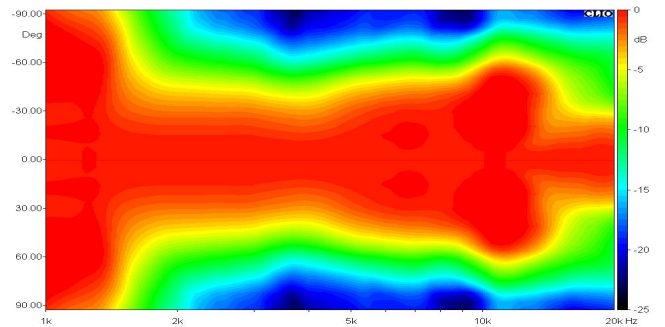
THIELE-SMALL PARAMETERS

Qms	7.20	Sd	81.70 cm ²
Qes	0.33	Vas	1.95 liter
Qts	0.32	u0	1.22 %
Fs	129 Hz	XMax	3.5 mm
Re	5.27 Ohm	Le	0.36 mH
Mms	7.30 g	Rms	0.82 Kg/s
Cms	0.21 mm/N	Efficiency Bandwidth	389.26
Bl	9.70 dB		

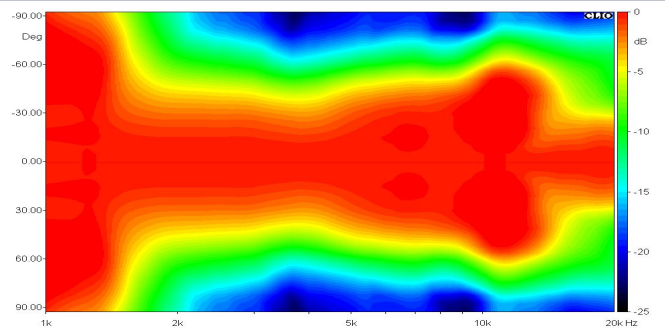
MATERIALS

Voice Coil Former Material	Kapton
Voice Coil Wire	Copper
Membrane Material	Paper (LF) Polyester (HF)
Membrane Shape	Exponential (LF) Dome (HF)
Magnet Type	Neodymium

HORIZONTAL DIRECTIVITY



VERTICAL DIRECTIVITY



DIAGRAM

