

KEY FEATURES

300 Watt Max Power (LF)

20 Watt max Power (HF)

2 in - 50 mm voice coil, Aluminium wire (LF)

1 in - 25 mm voice coil, Copper wire (HF)

Neodymium magnet - Ferrofluid inside (HF)

Wave guide (HF)

PA systems application



MEASURE CONDITIONS

14 litres

Pink noise

80 - 5000 Hz, 12 dB/oct

2 hours

GENERAL SPECIFICATIONS	LF	HF
Nominal Diameter	6.5 in - 165 mm	2 in - 50 mm
Nominal Impedance	8 Ohm	4 Ohm
Nominal Rdc	5.7 Ohm	3.4 Ohm
Power handling (AES) (*)	150 Watt	10 Watt
Max Power	300 Watt	20 Watt
Frequency Range	80 ÷ 2000 Hz	2000 ÷ 20000 Hz
Voice Coil Diameter	2 in - 50 mm	1 in - 26 mm
S.P.L. (1w, 1m)	94.8 dB	95 dB
Nominal Fs	100 Hz	1500 Hz
Flux Density	1.15 T	1.2 T

MECHANICAL & SHIPPING INFORMATIONS

Net weight	1.5 Kg
Overall Diameter	165 mm
Overall Depth	75 mm
Baffle Cut Diameter	147 mm
Mounting bolt diameter	154 mm

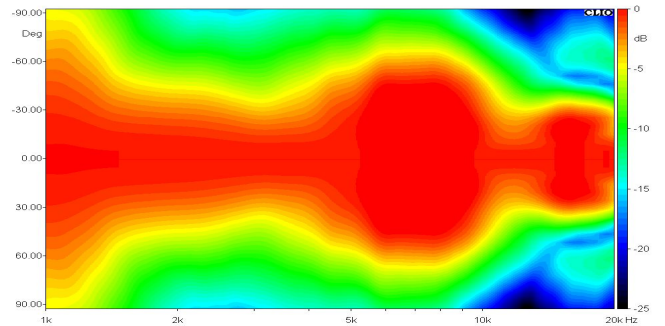
THIELE-SMALL PARAMETERS

Qms	6.17	Sd	134.8 cm ²
Qes	0.41	Vas	5.71 liter
Qts	0.39	u0	1.34 %
Fs	100 Hz	XMax	5.5 mm
Re	5.76 Ohm	Le	0.54 mH
Mms	11.30 g	Rms	1.15 Kg/s
Cms	0.22 mm/N	Efficiency Bandwidth	242.58
Bl	9.96 T*m		

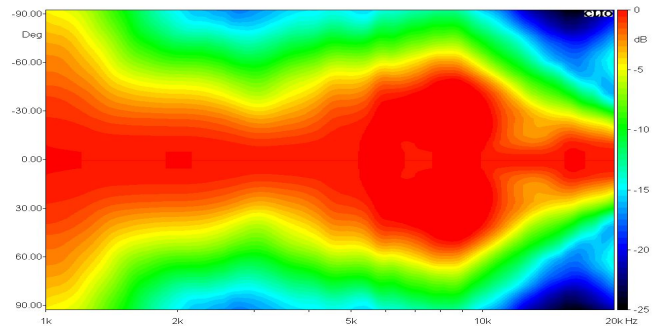
MATERIALS

Voice Coil Former Material	Kapton (LF) Aluminium (HF)
Voice Coil Wire	Aluminium (LF) Copper (HF)
Membrane Material	Paper (LF) Polyester (HF)
Membrane Shape	Exponential (LF) Dome (HF)
Magnet Type	Neodymium

HORIZONTAL DIRECTIVITY



VERTICAL DIRECTIVITY



DIAGRAM