

## KEY FEATURES

- 1000 Watt Max Power (LF)
- 280 Watt Max Power (HF)
- 100 mm (4 in) voice coil, aluminium wire (LF)
- 100 mm (4 in) voice coil, aluminium wire (HF)
- Interleaved sandwich voice coil (LF)
- Titanium diaphragm (HF)
- Neodymium magnet assembly
- Copper short, cap for extended frequency response (HF)



## MEASURE CONDITIONS

- 80 litres
- Pink noise
- 20 - 2000 Hz, 12 dB/oct
- 2 hours

GENERAL SPECIFICATIONS	LF	HF
Nominal Diameter	15 in - 380 mm	2 in - 50 mm
Nominal Impedance	8 Ohm	8 Ohm
Power handling (AES) (*)	500 Watt	140 Watt
Max Power	1000 Watt	280 Watt
Frequency Range	40 ÷ 1200 Hz	800 ÷ 20000 Hz
Voice Coil Diameter	4 in - 100 mm	4 in - 100 mm
S.P.L. (1w, 1m)	99 dB	106 dB
Nominal Fs	55 Hz	450 Hz
Flux Density	1.05 T	1.25 T

## MECHANICAL &amp; SHIPPING INFORMATIONS

Net weight	8.3 kg
Overall Diameter	388 mm
Overall Depth	211 mm
Baffle Cut Diameter	354 mm
Mounting bolt diameter	368 mm

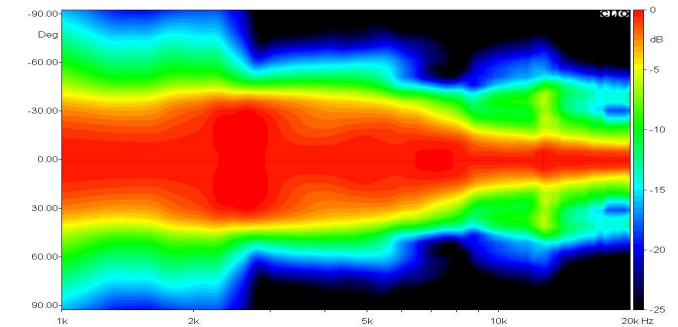
## THIELE-SMALL PARAMETERS

Qms	17.30	Sd	855.00 cm <sup>2</sup>
Qes	0.40	Vas	88.92 liter
Qts	0.39	u0	3.58 %
Fs	55.10 Hz	XMax	7.5 mm
Re	6.00 Ohm	Le	0.87 mH
Mms	96.23 g	Rms	1.93 Kg/s
Cms	0.09 mm/N	Efficiency Bandwidth	137.45
Bl	22.33 T*m		

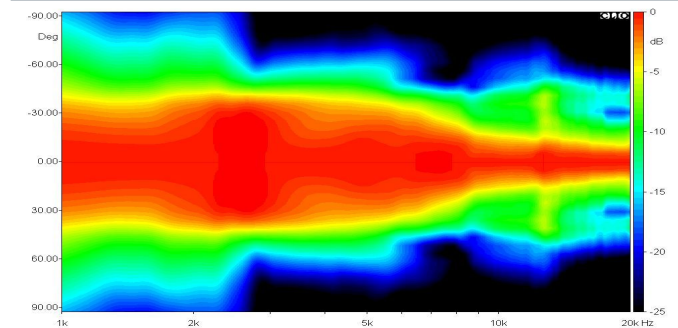
## MATERIALS

Voice Coil Former Material	Fiberglass (LF), Kapton (HF)
Voice Coil Wire	Aluminium (LF-HF)
Membrane Material	Doped Paper (LF), Titanium (HF)
Membrane Shape	Exponential (LF), Dome (HF)
Magnet Type	Neodymium

## HORIZONTAL DIRECTIVITY



## VERTICAL DIRECTIVITY



## DIAGRAM

