

KEY FEATURES

- 700 Watt Max Power (LF)
- 220 Watt Max Power (HF)
- 75 mm (3 in) voice coil, aluminium wire (LF)
- 72 mm (2,83 in) voice coil, aluminium wire (HF)
- Interleaved sandwich voice coil (LF)
- Titanium diaphragm (HF) - Neodymium magnet assembly
- Copper short, cap for extended frequency response (HF)



MEASURE CONDITIONS

- 60 liters
- Pink noise
- 40-2000 Hz, 12dB/oct
- 2 hours

GENERAL SPECIFICATIONS	LF	HF
Nominal Diameter	12" - 320 mm	1,4" - 35,6 mm
Nominal Impedance	8 Ohm	8 Ohm
Power handling (AES) (*)	350 Watt	110 Watt
Max Power	700 Watt	220 Watt
Frequency Range	60-3000 Hz	1200-20000 Hz
Voice Coil Diameter	3 in - 75 mm	2,83 in - 72 mm
S.P.L. (1w, 1m)	99 dB	106 dB
Nominal Fs	60 Hz	450 Hz
Flux Density	1,25 T	2 T

MECHANICAL & SHIPPING INFORMATIONS

Net weight	5,3 kg
Overall Diameter	315 mm
Overall Depth	178 mm
Baffle Cut Diameter	282 mm
Mounting bolt diameter	296 mm

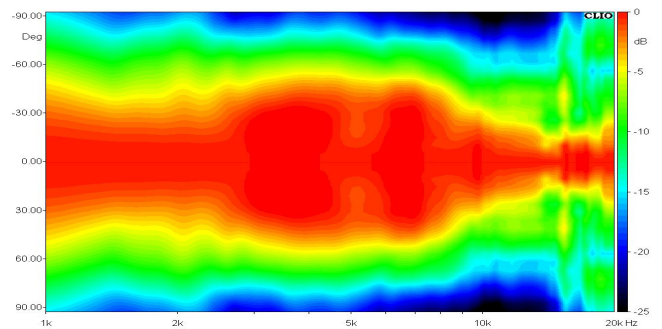
THIELE-SMALL PARAMETERS

Qms	11,68	Sd	551,00 cm ²
Qes	0,38	Vas	60,31 litre
Qts	0,37	u0	3,40 %
Fs	60,40 Hz	XMax	6 mm
Re	5,64 Ohm	Le	0,66 mH
Mms	49,04 g	Rms	1,84 Kg/s
Cms	0,14 mm/N	Efficiency Bandwidth	160,29
Bl	16,69 T*m		

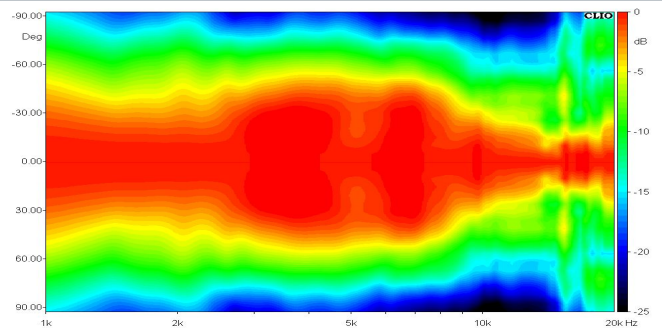
MATERIALS

Voice Coil Former Material	Kapton (LF-HF)
Voice Coil Wire	Aluminium (LF-HF)
Membrane Material	Doped Paper (LF), Titanium (HF)
Membrane Shape	Exponential (LF), Dome (HF)
Magnet Type	Neodymium

HORIZONTAL DIRECTIVITY



VERTICAL DIRECTIVITY



DIAGRAM

