

KEY FEATURES

- 600 Watt Max Power (LF)
- 120 Watt Max Power (HF)
- 64 mm (2.5 in) voice coil, copper wire (LF)
- 44 mm (1.73 in) voice coil, aluminium wire (HF)
- Interleaved sandwich voice coil (LF)
- Kapton diaphragm (HF)
- Neodymium magnet assembly
- Copper short, cap for extended frequency response (HF)
- Weather protected membrane for outdoor use (LF)



MEASURE CONDITIONS

- 40 litres
- Pink noise
- 20 - 2000 Hz, 12 dB/oct
- 2 hours

GENERAL SPECIFICATIONS	LF	HF
Nominal Diameter	10 in - 250 mm	1 in - 25.4 mm
Nominal Impedance	8 Ohm	8 Ohm
Power handling (AES) (*)	300 Watt	60 Watt
Max Power	600 Watt	120 Watt
Frequency Range	60 ÷ 3000 Hz	1000 ÷ 17000 Hz
Voice Coil Diameter	2.5 in - 64 mm	1.7 in - 44 mm
S.P.L. (1w, 1m)	95 dB	106 dB
Nominal Fs	65 Hz	1200 Hz
Flux Density	1.1 T	1.95 T

MECHANICAL & SHIPPING INFORMATIONS

Net weight	3.6 kg
Overall Diameter	266 mm
Overall Depth	138 mm
Baffle Cut Diameter	235 mm
Mounting bolt diameter	253 mm

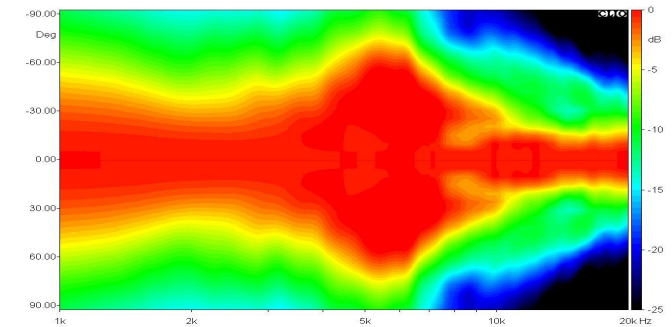
THIELE-SMALL PARAMETERS

Qms	12.72	Sd	355.00 cm ²
Qes	0.57	Vas	30.33 liter
Qts	0.55	u0	1.36 %
Fs	64.30 Hz	XMax	5.5 mm
Re	5.72 Ohm	Le	0.71 mH
Mms	35.71 g	Rms	1.13 Kg/s
Cms	0.17 mm/N	Efficiency Bandwidth	112.20
Bl	12.00 T*m		

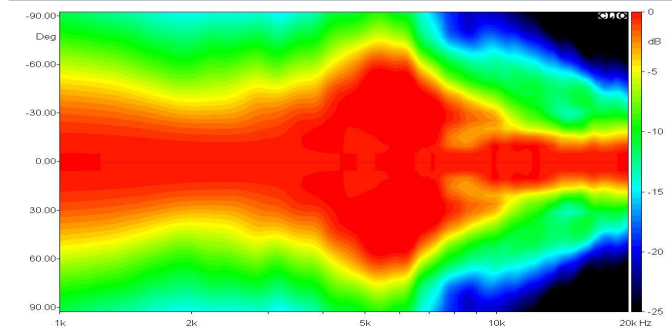
MATERIALS

Voice Coil Former Material	Kapton (LF-HF)
Voice Coil Wire	Copper (LF), Aluminium (HF)
Membrane Material	Doped Paper (LF), Kapton (HF)
Membrane Shape	Exponential (LF), Dome (HF)
Magnet Type	Neodymium

HORIZONTAL DIRECTIVITY



VERTICAL DIRECTIVITY



DIAGRAM

