

## KEY FEATURES

- 800 Watt Max Power (LF)
- 120 Watt Max Power (HF)
- 64 mm (2.5 in) voice coil, copper wire (LF)
- 44 mm (1.73 in) voice coil, aluminium wire (HF)
- Interleaved sandwich voice coil (LF)
- Kapton diaphragm (HF)
- Neodymium magnet assembly
- Copper short, cap for extended frequency response (HF)
- Weather protected membrane for outdoor use (LF)



## MEASURE CONDITIONS

- 60 litres
- Pink noise
- 20 - 2000 Hz, 12 dB/oct
- 2 hours

GENERAL SPECIFICATIONS	LF	HF
Nominal Diameter	12 in - 320 mm	1 in - 25.4 mm
Nominal Impedance	8 Ohm	8 Ohm
Power handling (AES) (*)	400 Watt	60 Watt
Max Power	800 Watt	120 Watt
Frequency Range	20 ÷ 2000 Hz	1000 ÷ 15000 Hz
Voice Coil Diameter	2.5 in - 64 mm	1.73 in - 44 mm
S.P.L. (1w, 1m)	96 dB	106 dB
Nominal Fs	48 Hz	1200 Hz
Flux Density	1.05 T	1.95 T

## MECHANICAL &amp; SHIPPING INFORMATIONS

Net weight	4 kg
Overall Diameter	315 mm
Overall Depth	170 mm
Baffle Cut Diameter	282 mm
Mounting bolt diameter	296 mm

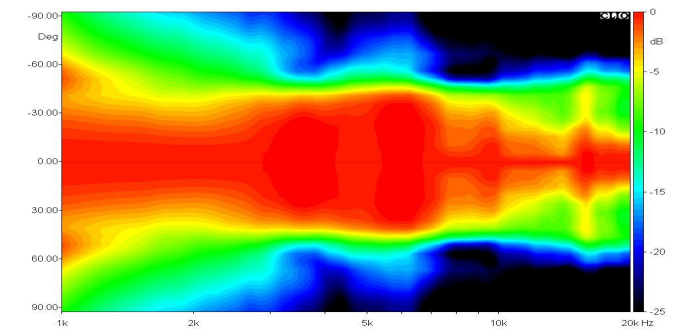
## THIELE-SMALL PARAMETERS

Qms	17.98	Sd	535.00 cm <sup>2</sup>
Qes	0.58	Vas	73.74 liter
Qts	0.56	u0	1.51 %
Fs	49.70 Hz	XMax	5.5 mm
Re	5.52 Ohm	Le	0.61 mH
Mms	55.84 g	Rms	0.97 Kg/s
Cms	0.18 mm/N	Efficiency Bandwidth	85.93
Bl	12.90 T*m		

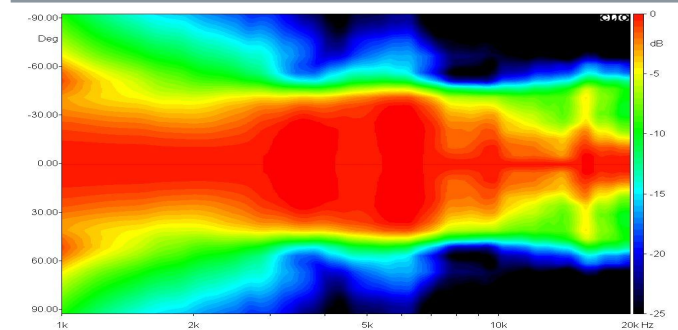
## MATERIALS

Voice Coil Former Material	Kapton (LF-HF)
Voice Coil Wire	Copper (LF), Aluminium (HF)
Membrane Material	Doped Paper (LF), Kapton (HF)
Membrane Shape	Exponential (LF), Dome (HF)
Magnet Type	Neodymium

## HORIZONTAL DIRECTIVITY



## VERTICAL DIRECTIVITY



## DIAGRAM

