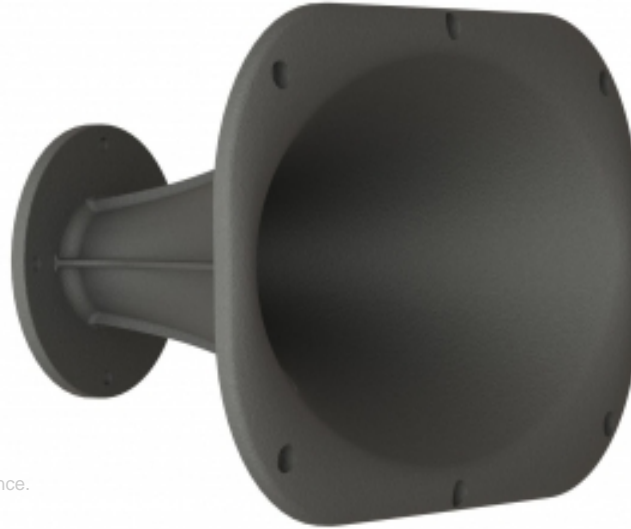


KEY FEATURES

- New generation V-Shape Horn - 1.4 in throat entry
- 60° x 40° differential dispersion
- Constant directivity on horizontal plane
- Mathematic on vertical plane for best acoustic performar
- Cast Aluminumframework for high heat dissipation

MEASURE CONDITIONS

Measurement executed in free air (1m) in semi-anechoic chamber.
 Polars were acquired by placing the unit on a computer controlled turntable inside chamber.
 Applied RMS Voltage is set to 2.83 V for 8 ohm nominal impedance.



HORIZONTAL DIRECTIVITY

VERTICAL DIRECTIVITY

GENERAL SPECIFICATIONS

| | |
|---------------------------------|--|
| Throat Diameter | 1.4 in - 35.56 mm |
| Minimum Crossover Frequency (1) | 800 Hz |
| Frequency Range | 0.5 ÷ 20 kHz |
| Material | Cast Aluminum |
| Horizontal Coverage Angle (2) | 60 degree |
| Vertical Coverage Angle (2) | 40 degree |
| Directivity Index (2) (3) | 8.4 dB |
| Horizontal Progression | Constant Directivity |
| Colour | Black Sandblasted Finish |
| Vertical Progression | Hyperbolic Cosine |
| Total Volume Size | 3.14 dm ³ (0.11 ft ³) |

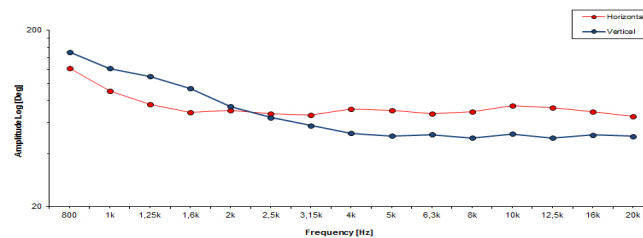
NOTES

- (1) Free space acoustic loading (4π sr).
- (2) Coverage value -6 dB is averaged on frequency range 1.25 ÷ 12.5 kHz.
- (3) Measured step is 5° one-third octave polar, averaging values on horizontal and vertical planes.

MECHANICAL & SHIPPING INFORMATIONS

| | |
|------------------------|----------------------|
| Net weight | 1.9 Kg (4.19 lb) |
| Mouth Height | 209 mm (8.23 in) |
| Mouth Width | 330 mm (13 in) |
| Depth | 191 mm (7.52 in) |
| Mouth Mounting Holes | 6 x 6.3 mm (0.25 in) |
| Shipping Box Size (mm) | 345 x 225 x 240 |
| Shipping Box Size (in) | 13.6 x 8.9 x 9.5 |

BEAMWIDTH



HORIZONTAL POLAR PATTERN

VERTICAL POLAR PATTERN