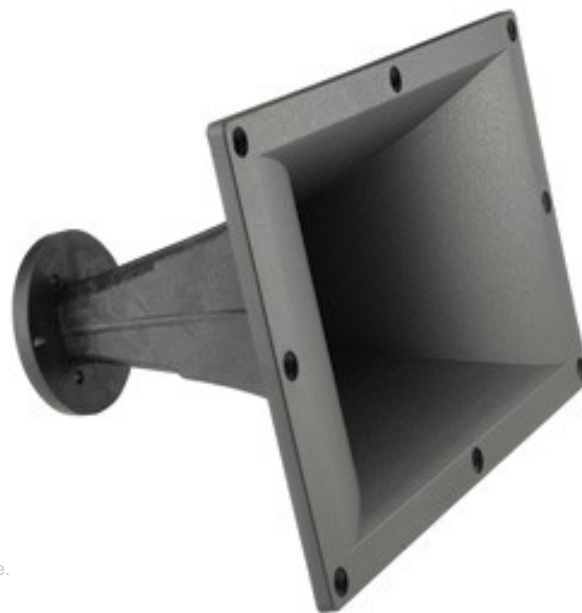


KEY FEATURES

- 1 in throat entry
- Exponential profile
- 80° x 60° polar dispersion
- ABS + fiberglass framework



MEASURE CONDITIONS

Measurement executed in free air (1m) in semi-anechoic chamber.

Polars were acquired by placing the unit on a computer controlled turntable inside chamber.

Applied RMS Voltage is set to 2.83 V for 8 ohm nominal impedance.

GENERAL SPECIFICATIONS

Throat Diameter	1 in - 25 mm
Minimum Crossover Frequency (1)	600 Hz
Frequency Range	0.5 ÷ 20 kHz
Material	ABS + fiber glass
Horizontal Coverage Angle (2)	80 degree
Vertical Coverage Angle (2)	60 degree
Directivity Index (2) (3)	3.4 dB
Horizontal Progression	Exponential
Colour	Black Sandblased Finish
Vertical Progression	Exponential
Total Volume Size	2.91 dm ³ (0.1 ft)

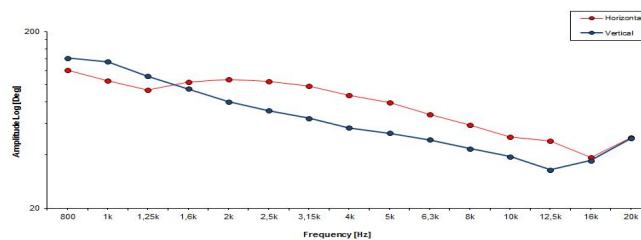
NOTES

- (1) Free space acoustic loading (4 sr).
- (2) Coverage value -6 dB is averaged on frequency range 1.25 ÷ 12.5 kHz.
- (3) Measured step is 5° one-third octave polar, averaging values on horizontal and vertical planes.

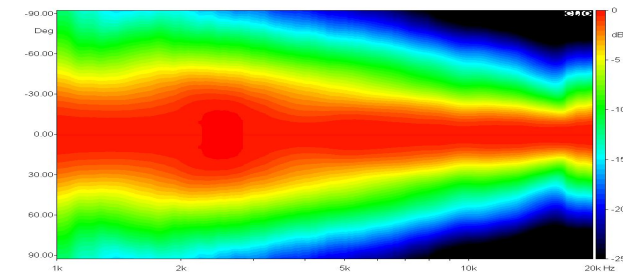
MECHANICAL & SHIPPING INFORMATIONS

Net weight	0.7 Kg (1.54 lb)
Mouth Height	199 mm (7.83 in)
Mouth Width	319 mm (12.56 in)
Depth	210 mm (8.27 in)
Mouth Mounting Holes	8 x 6 mm (0.24 in)
Shipping Box Size (mm)	345 x 225 x 245
Shipping Box Size (in)	13.6 x 8.9 x 9.6

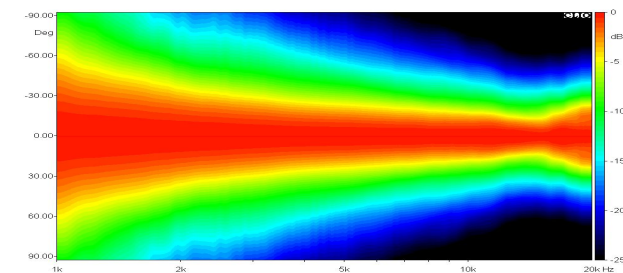
BEAMWIDTH



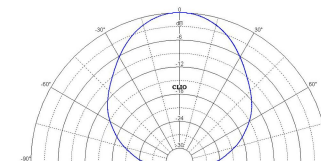
HORIZONTAL DIRECTIVITY



VERTICAL DIRECTIVITY



HORIZONTAL POLAR PATTERN



VERTICAL POLAR PATTERN

