



GENERAL SPECIFICATIONS

Throat Diameter	35.56 mm (1.4 in)
Frequency Range	0.5 ÷ 20 kHz
Minimum Crossover Frequency (1)	800 Hz
Horizontal Coverage Angle (2)	60 degree
Vertical Coverage Angle (2)	40 degree
Directivity Index (2) (3)	8.4 dB
Horizontal Progression	Constant Directivity
Vertical Progression	Hyperbolic Cosine
Material	Cast Aluminium
Colour	Black Sandblasted Finish
Total Volume Size	3.14 dm ³ (0.11 ft ³)

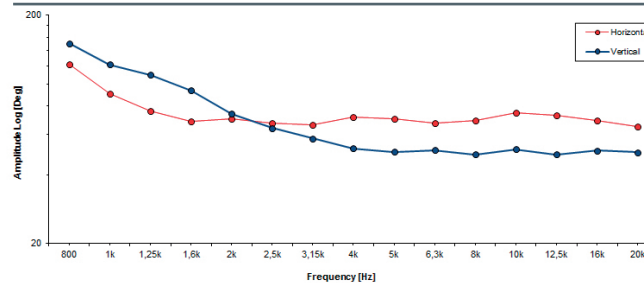
NOTES

- (1) Free space acoustic loading (4πsr).
- (2) Coverage value -6 dB is averaged on frequency range 1.25 ÷ 12.5 kHz.
- (3) Measured step is 5° one-third octave polar, averaging values on horizontal and vertical planes.

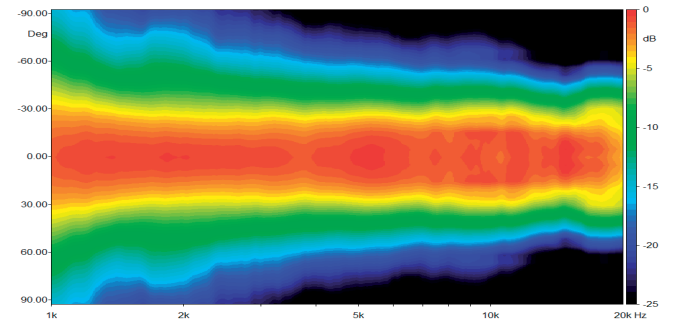
MECHANICAL & SHIPPING INFORMATIONS

Mouth Height	209 mm (8.23 in)
Mouth Width	330 mm (13 in)
Depth	191 mm (7.52 in)
Mouth Mounting Holes	6 x 6.3 mm (0.25 in)
Net Weight	1.9 Kg (4.19 lb)
Shipping Box Size (1 unit)	345 x 225 x 240 mm (13.6 x 8.9 x 9.5 in)

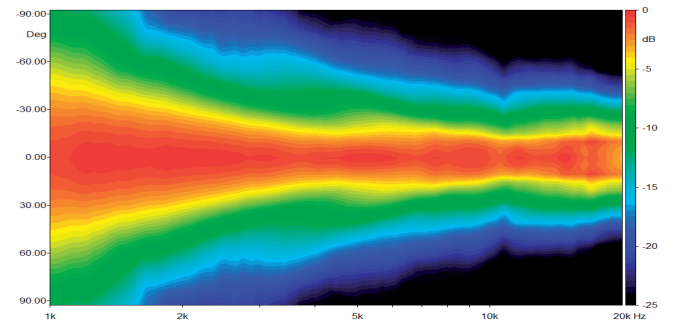
BEAMWIDTH



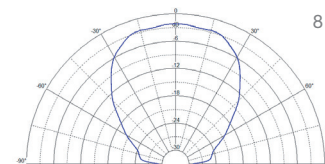
HORIZONTAL DIRECTIVITY



VERTICAL DIRECTIVITY



HORIZONTAL POLAR PATTERN



VERTICAL POLAR PATTERN

