

KEY FEATURES

- 2000 Watt Max Power
- 100 mm (4 in) voice coil, copper wire
- Double spider for improved control and linearity
- Ferrite magnet assembly
- Interleaved sandwich voice coil
- Rubber surround
- 4 Ohm available



GENERAL SPECIFICATIONS

Nominal Diameter	12 in - 320 mm
Nominal Impedance	8 Ohm
Nominal Rdc	6.5 Ohm
Power handling (AES) (*)	1000 Watt
Max Power	2000 Watt
Minimum Impedance	7.99 Ohm
Frequency Range	20 ÷ 200 Hz
Voice Coil Diameter	100 mm (4 in)
S.P.L. (1w, 1m)	91 dB
Nominal Fs	43 Hz
Flux Density	1.1 T
Sinusoidal Test Voltage	15 V

(*) Life Test

Box Volume	60 liters
Input Signal	Pink noise
Band Pass Filter	20 - 200 Hz, 12 dB/oct
Test duration	2 hours

MECHANICAL & SHIPPING INFORMATIONS

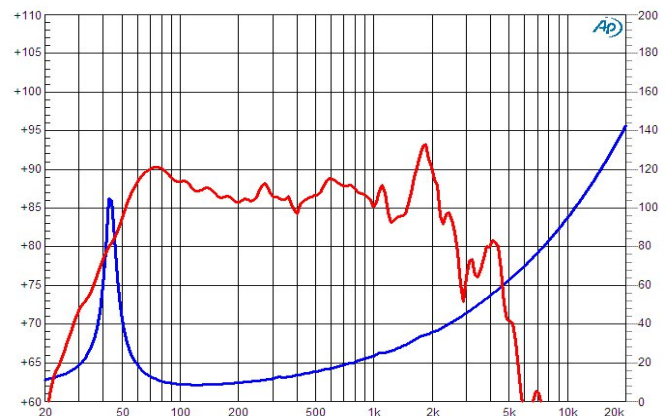
Net weight	11.1 kg
Overall Diameter	314 mm
Overall Depth	135 mm
Baffle Cut Diameter	282 mm
Mounting holes number	8
Mounting holes diameter	7 mm
Mounting bolt diameter	196 mm

MATERIALS

Frame Material	Aluminium
Voice Coil Former Material	Kapton
Voice Coil Wire	Copper
Cone Material	Doped Paper
Cone Shape	Straight
Surround Material	Rubber
Surround Shape	Half roll
Suspension Material	Doped Nomex® fabric
Magnet Type	Ferrite
Magnet Weight	3500 g

DIAGRAM

Frequency Response	Reflex Box 60 dmc - 2.83 V - 1m
Impedance	(Iac=10m A)



THIELE-SMALL PARAMETERS

Qms	6.99
Qes	0.40
Qts	0.38
Fs	43.61 Hz
Re	6.73 Ohm
Mms	137.3 g
Cms	0.00097 m/N
Bl	25.28 T*m
Sd	0.049 m²
Vas	0.032 m³
u0	0.65 %
XMax	11.5 mm
Le	2.35 mH

Air gap height = mm 10
Winding height = mm 33